

# KOCHIA? Fight back.



## *Reclaim your toughest acres with Ducks Unlimited Canada's Marginal Areas Program (MAP).*

Herbicide-resistant kochia is spreading fast across the Prairies—and it's not going away. But there is a solution. Seeding perennial forages in weed-prone and saline areas can break the cycle and protect your most productive acres.

It's about making more money by farming less land and keeping your best field areas weed-free and productive.

## **Why seed forages with MAP?**

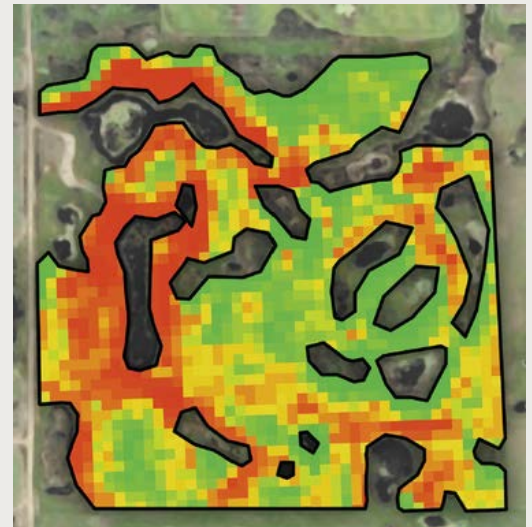
- **Reduce herbicide-resistant weed pressure.**
- Capitalize on **haying opportunities** on unproductive annual cropland.
- **Soil health** and **pollinator** community benefits.
- Financial **incentives** available.
- **Expert support** from DUC agrologists with experience establishing forage in tough conditions.
- Results you can trust—we've helped seed **more than 25,000 saline acres!**

**Contact your Alberta DUC office:**

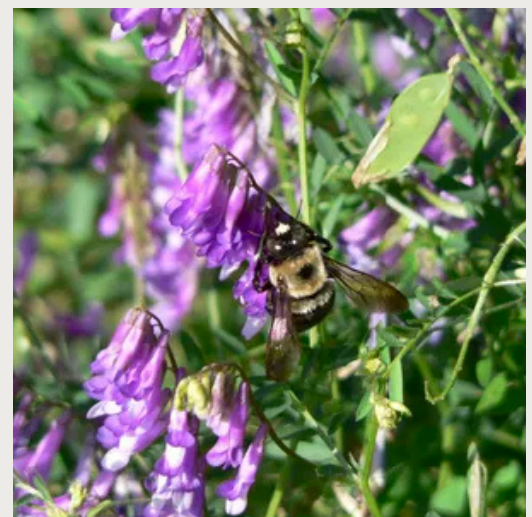
**1-866-479-3825**

**du\_edmonton@ducks.ca**

*Funding support provided by:*



*Recoup an average of **\$70 acre** in lost input costs when you remove your least productive areas from annual crop production.*



*Increase yield and profit by supporting beneficial insect communities on non-crop acres.*

***Your toughest acres can work for you—not against you. Let us show you how.***